

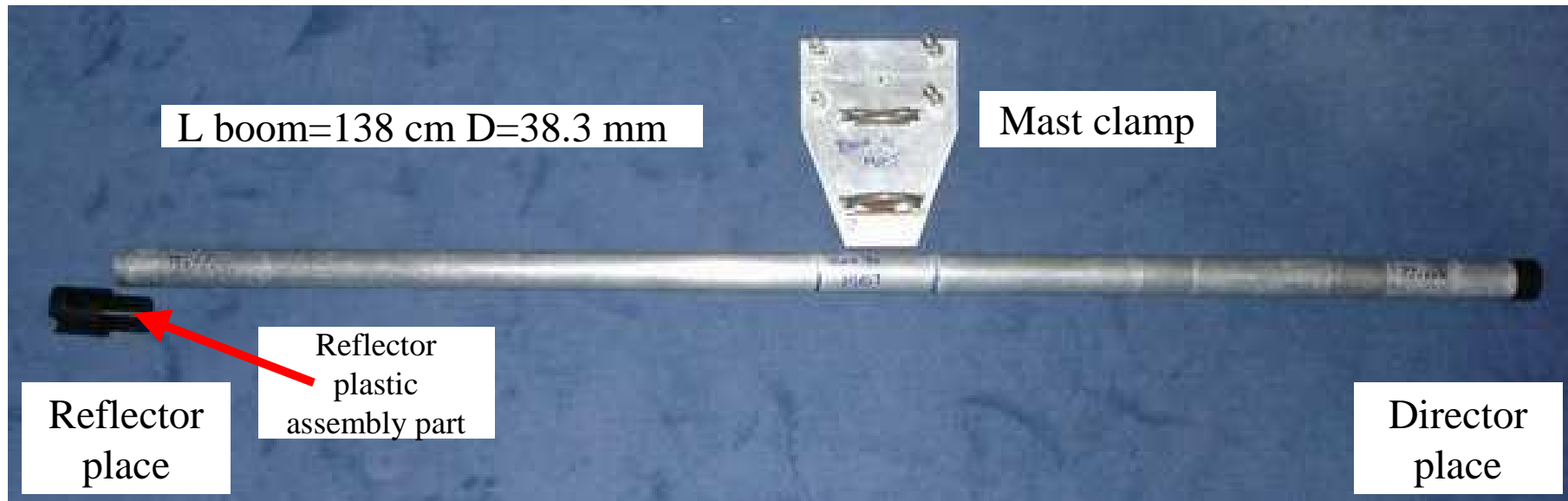
# TGM MQ-26

## Brief mounting description



**2 element 6/10/12/15/17/20 meter yagi**

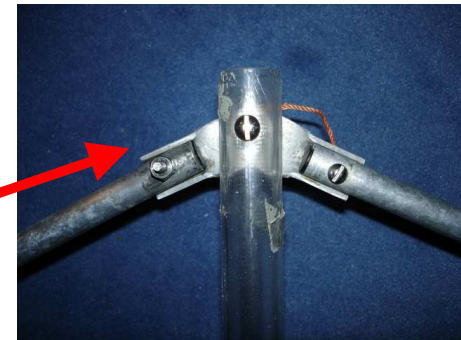
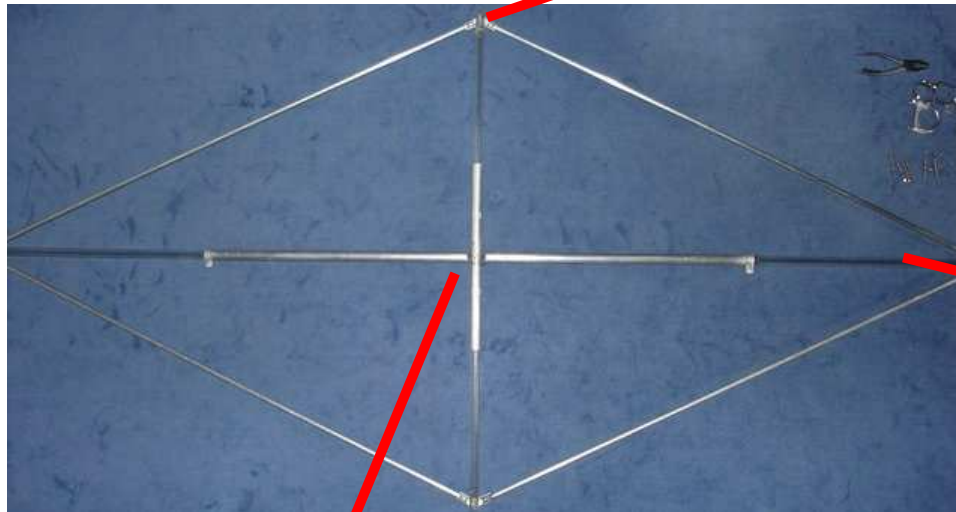
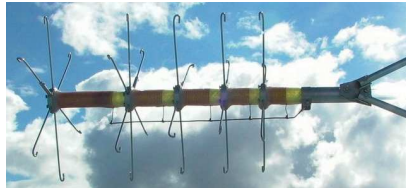
# TGM MQ-26 : one part boom



	<b>Refl/dipole</b>
Entraxe	140.5 cm

# TGM MQ-26 : reflector rear view

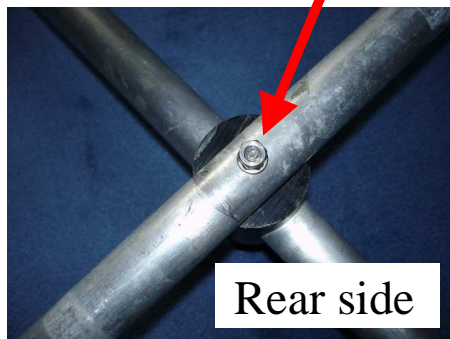
- Overall length = 266.7 cm without both insulated traps
- Isolated from boom with plexiglas hardware



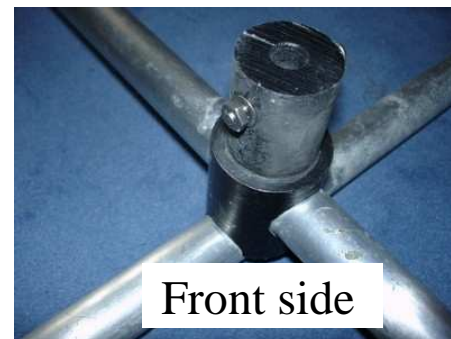
Traverses diagonales  
vissées à l'ARRIERE



Traverses diagonales  
vissées à l'AVANT

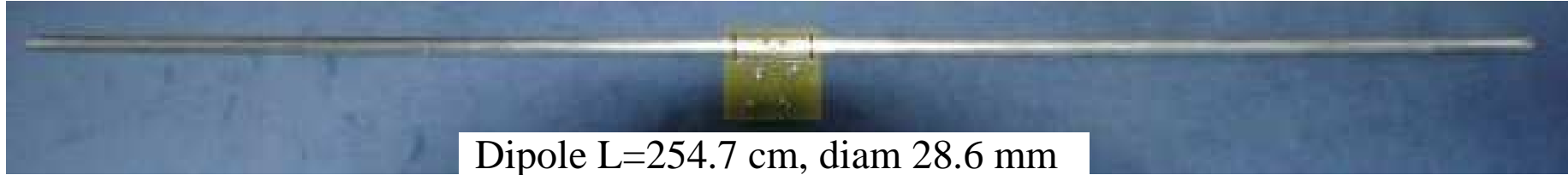


Rear side



Front side

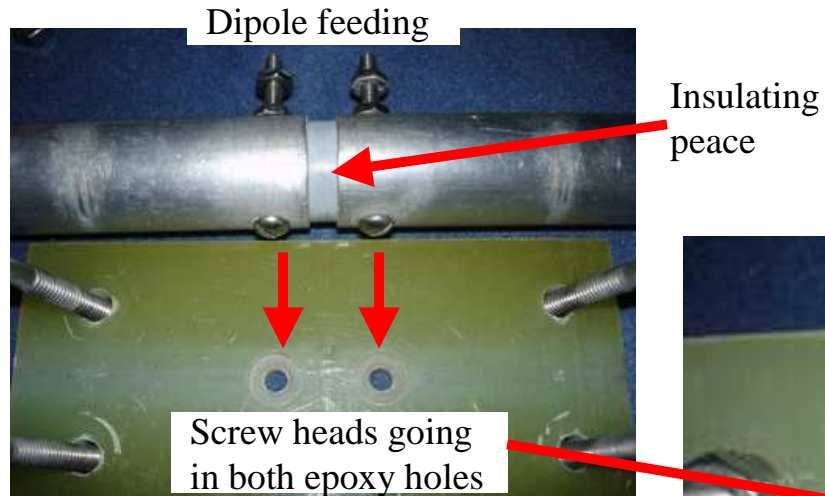
# TGM MQ-26 : dipole



Dipole L=254.7 cm, diam 28.6 mm

# TGM MQ-26 : dipole

## 1/ Dipole positioning



## 2/ Dipole fixing (top view)

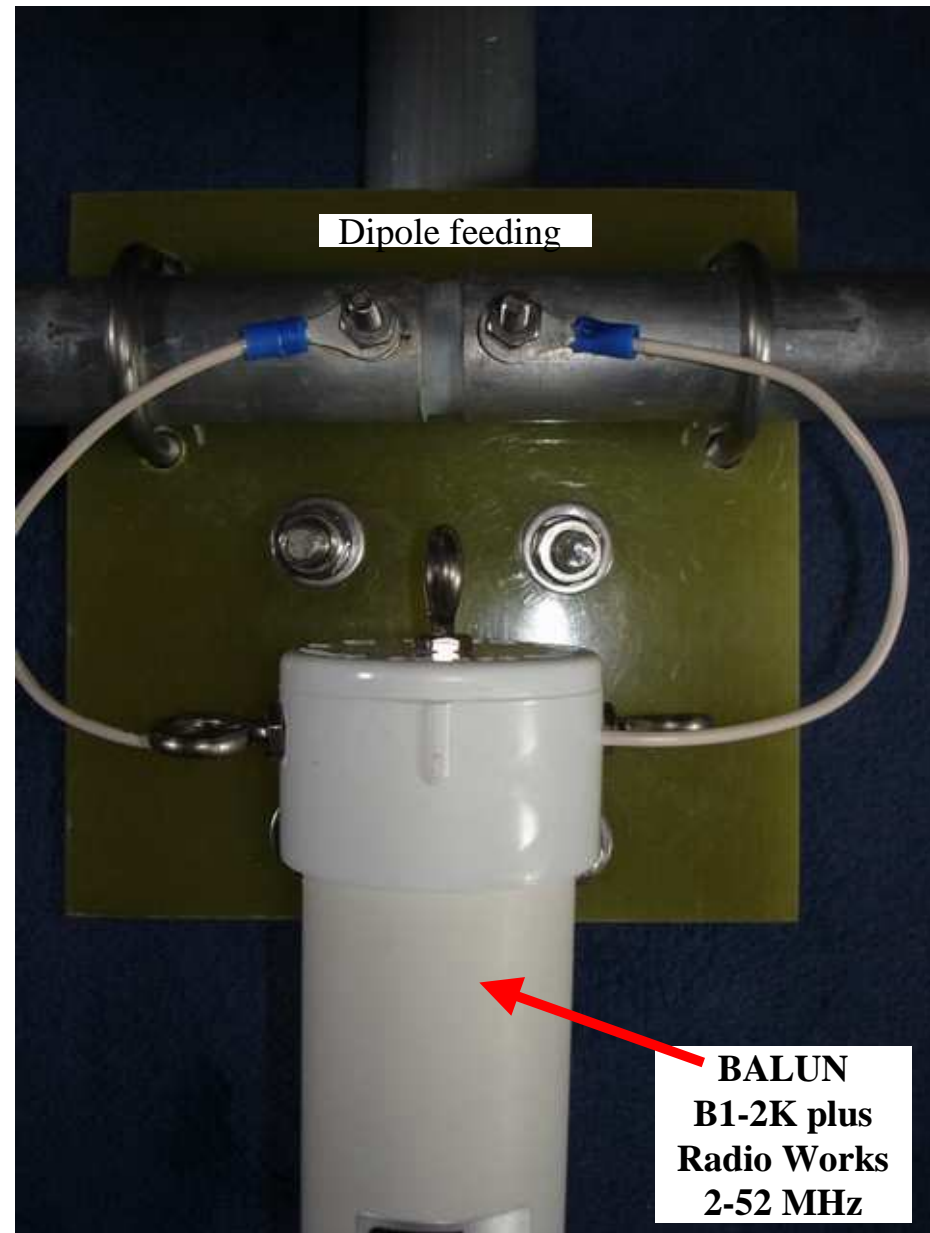


## 3/ Dipole fixing (bottom view)



# TGM MQ-26 : coax feeding

4/ Balun positioning (top view)



## Reflector half : 24 spokes dims for 1 trap assembly

Epoxy marked in red

<b>Dims feet</b>	<b>Dims cm</b>	<b>Number</b>
5 1/2	13.8 !!	16
5	12.7	3
adjust	16.7	2
adjust	15.7	2
adjust	12.2	1

## Dipole half : 24 spokes dims for 1 trap assembly

Epoxy marked in blue

<b>Dims feet</b>	<b>Dims cm</b>	<b>Number</b>
5 1/2	14	<b>16</b>
5	12.7	<b>3</b>
adjust	14.1	<b>1</b>
adjust	12.9	<b>1</b>
adjust	12.2	<b>1</b>
adjust	10.8	<b>1</b>
adjust	9.9	<b>1</b>



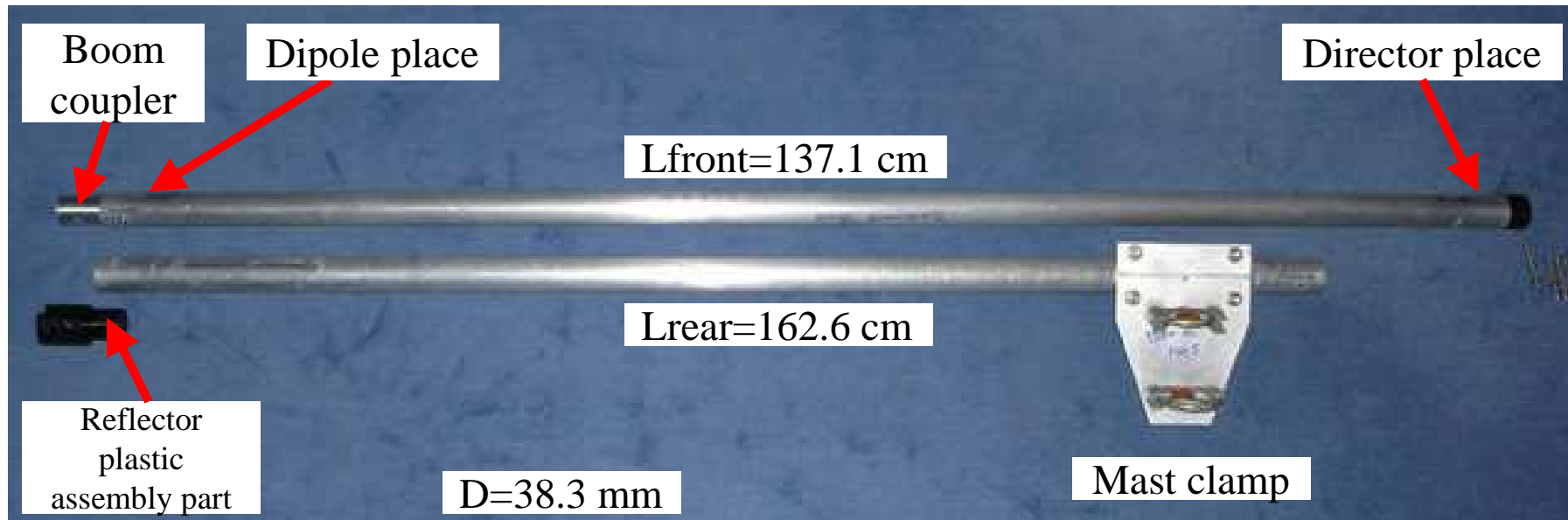
## Each element half : 24 spokes repartition

	Reflector (red)		Dipole (blue)	
<b>10M</b>	5 ½ qty 3	4 ¾ qty 1	5 ½ qty 3	4 ¼ qty 1
<b>12M</b>	5 ½ qty 3	5 ¾ qty 1	5 ½ qty 3	5 ¼ qty 1
<b>15M</b>	5 ½ qty 3	6 ¼ qty 1	5 ½ qty 3	5 qty 1
<b>17M</b>	5 ½ qty 5	6 ¼ qty 1	4 ¾ qty 5	6 ¼ qty 1
<b>20M</b>	5 ½ qty 5	6 qty 1	5 ½ qty 6	0

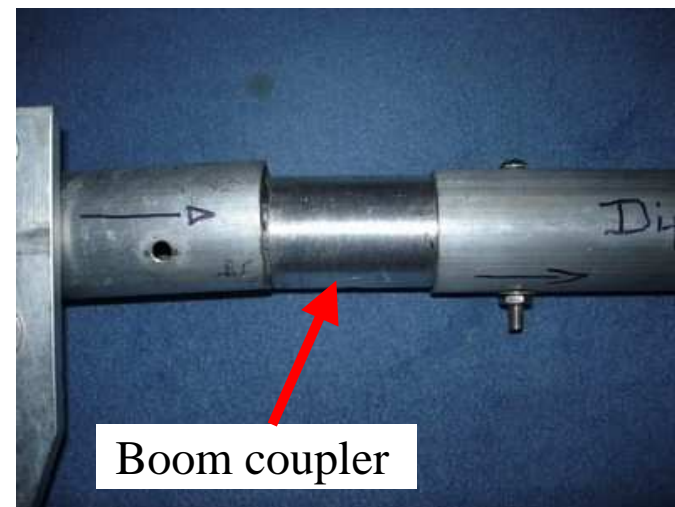
# TGM MQ-36

**3 element 6/10/12/15/17/20 meter yagi**

# TGM MQ-36 : 2 parts boom

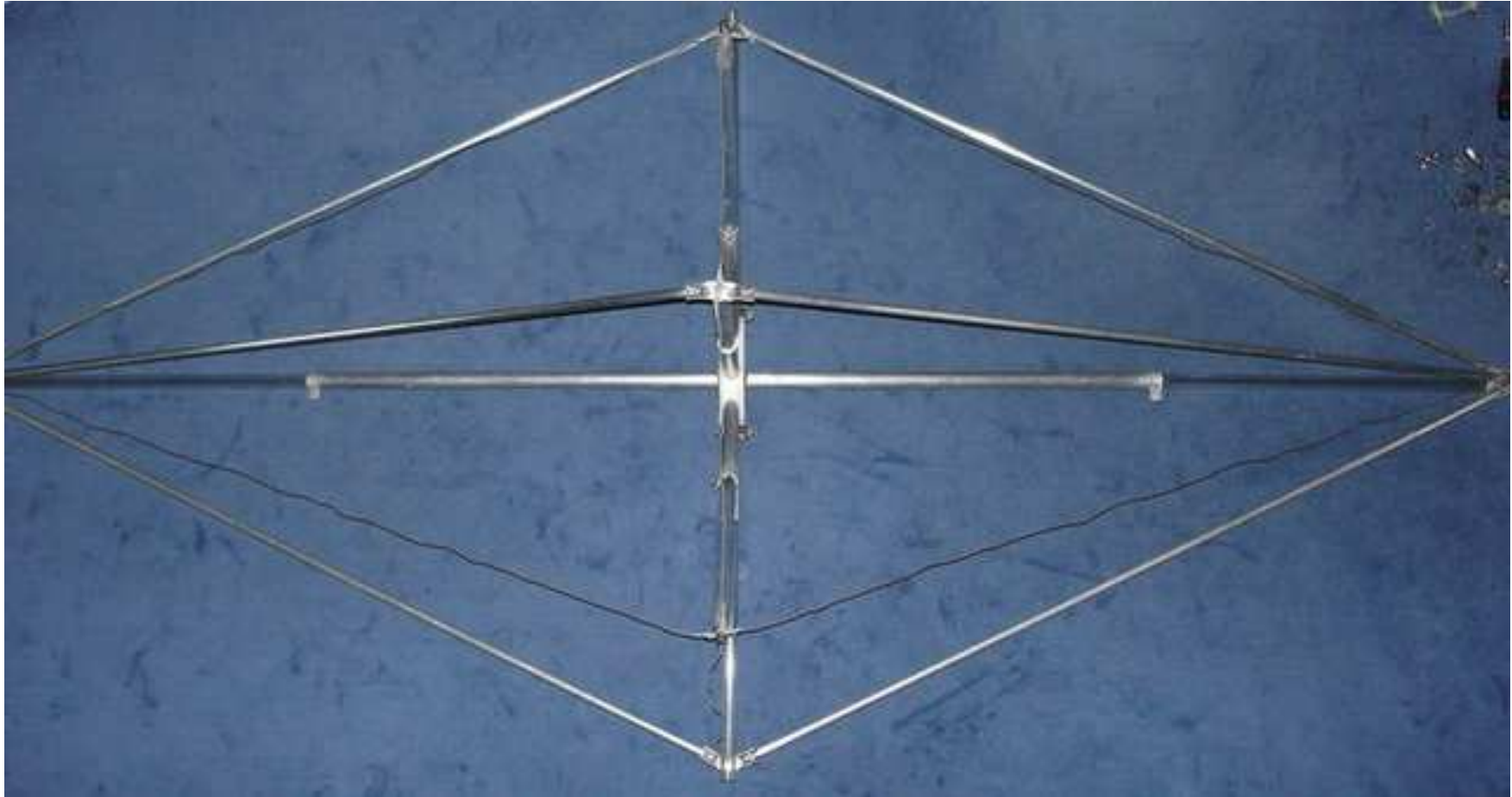


	Refl/dipole	Dipole/dir
Entraxe	141.6 cm	161.3 cm

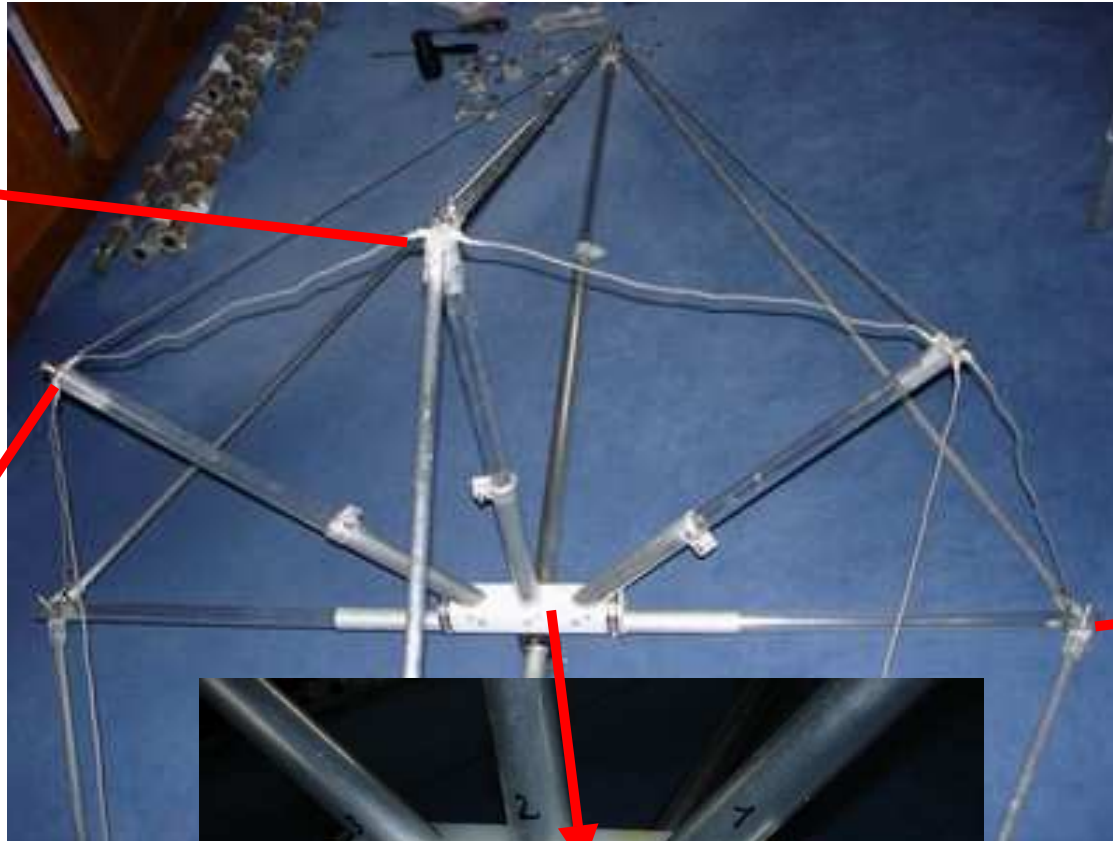
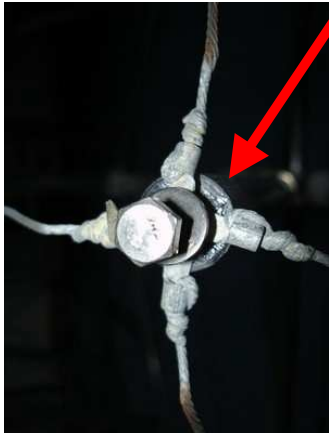


# TGM MQ-36 : reflector rear view

Whole rear view assembly

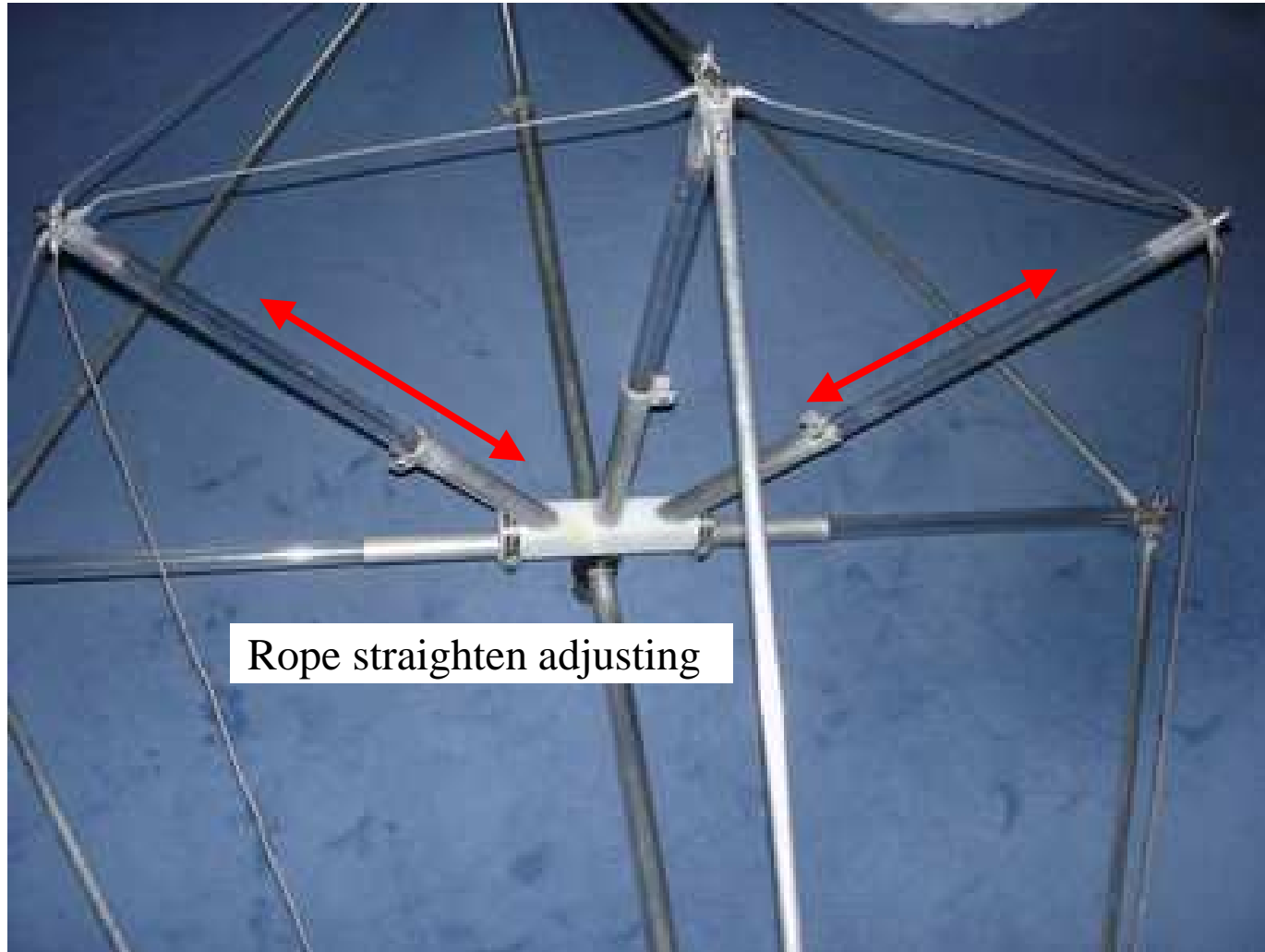


# TGM MQ-36 : reflector



Traverses diagonales  
vissées à l'ARRIERE

## TGM MQ-36 : reflector

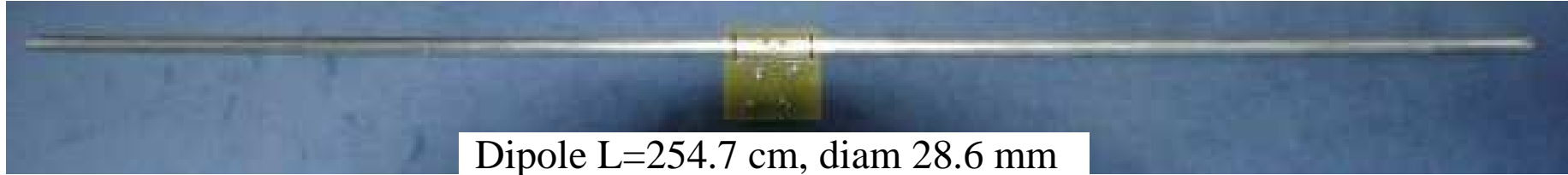


## TGM MQ-36 : reflector



**THIS way is the best !**

# TGM MQ-36 : dipole

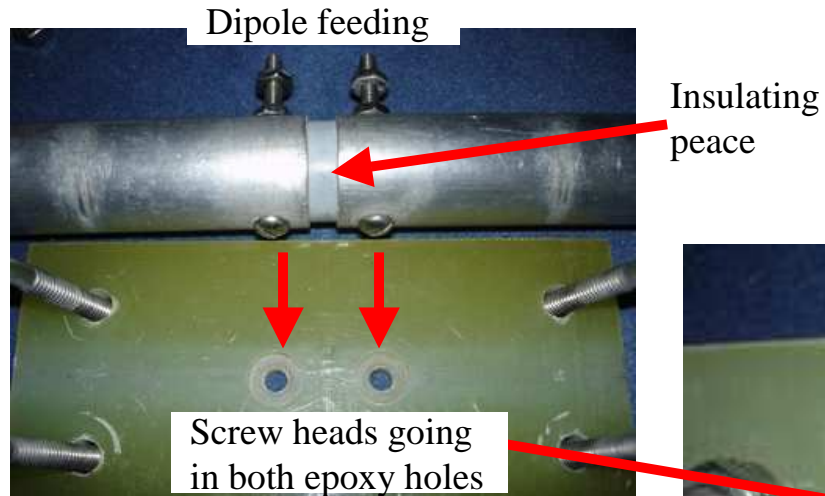


Dipole L=254.7 cm, diam 28.6 mm



# TGM MQ-36 : dipole

## 1/ Dipole positioning



## 2/ Dipole fixing (top view)

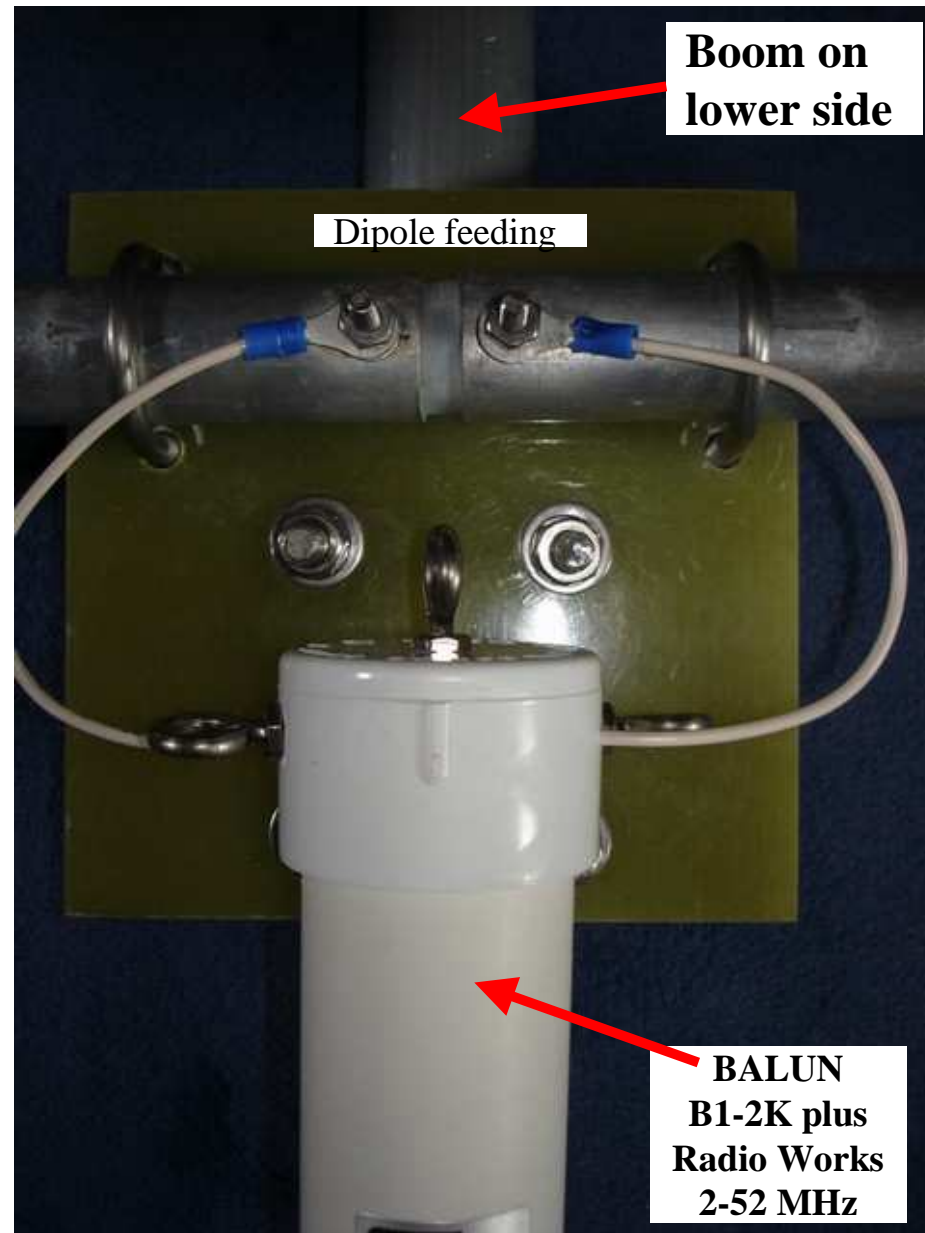


## 3/ Dipole fixing (bottom view)



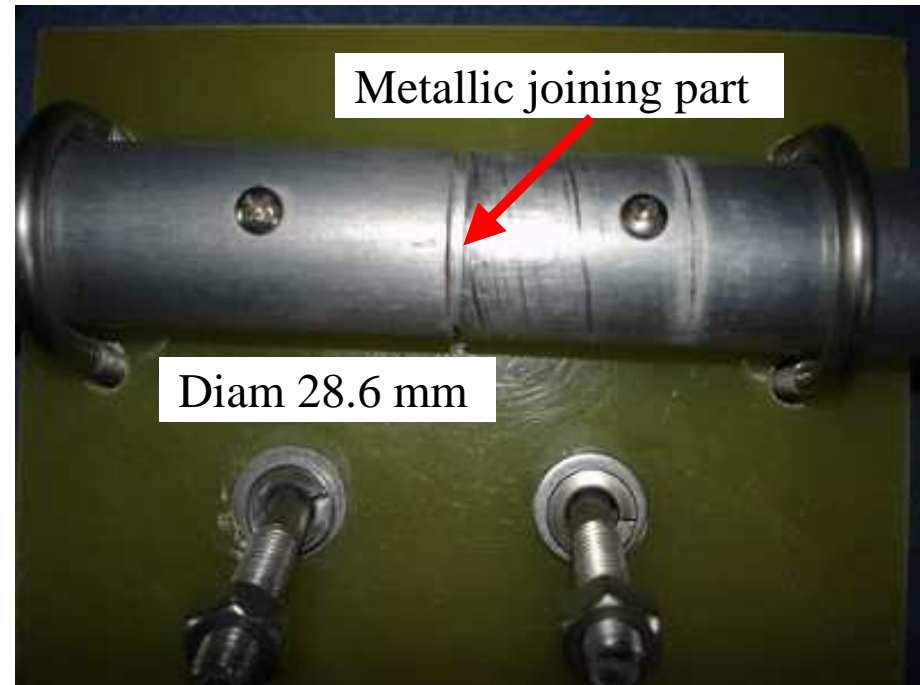
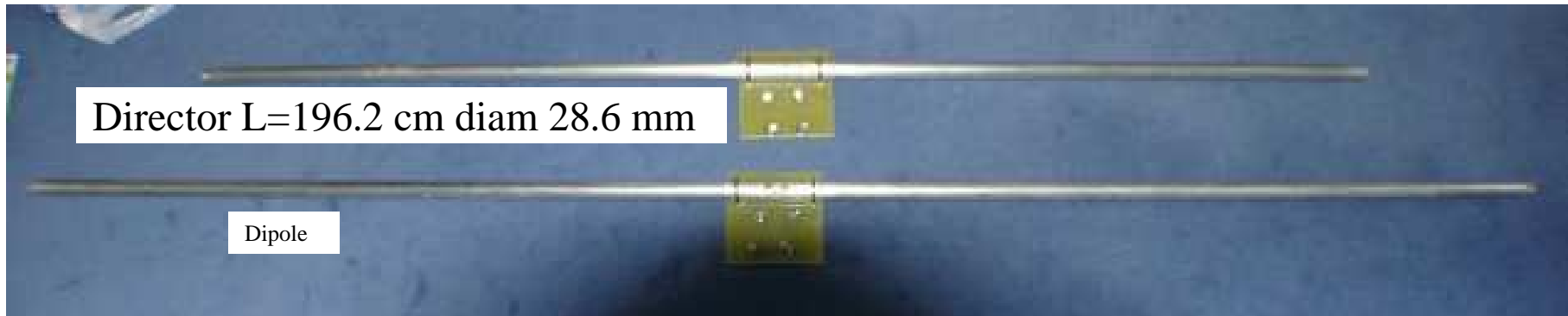
# TGM MQ-36 : coax feeding

4/ Balun positioning (top view)



# TGM MQ-36 : director

- Overall length = 196.2 cm without both insulated traps
- Isolated from boom



## Trap coils spokes : dimensions table feet / mm

	<b>Dims feet</b>	<b>Dims cm</b>
Que MQ-36	<b>4</b>	<b>10.16</b>
	<b>4 1/4</b>	<b>10.8</b>
Que MQ-36	<b>4 5/8</b>	<b>11.75</b>
	<b>4 3/4</b>	<b>12.07</b>
	<b>5</b>	<b>12.7</b>
	<b>5 1/4</b>	<b>13.34</b>
Que MQ-36	<b>5 1/2</b>	<b>14 (13.8)</b>
	<b>5 3/4</b>	<b>14.61</b>
	<b>6</b>	<b>15.24</b>
	<b>6 1/4</b>	<b>15.88</b>
Que MQ-36	<b>6 3/4</b>	<b>17.15</b>

## Reflector half : 24 spokes dims for 1 trap assembly

Epoxy marked in red

<b>Dims feet</b>	<b>Dims cm</b>	<b>Number</b>
5 1/2	13.8 !!	16
5	12.7	3
adjust	16.7	2
adjust	15.7	2
adjust	12.2	1

## Dipole half : 24 spokes dims for 1 trap assembly

Epoxy marked in blue

<b>Dims feet</b>	<b>Dims cm</b>	<b>Number</b>
5 1/2	14	<b>16</b>
5	12.7	<b>3</b>
adjust	14.1	<b>1</b>
adjust	12.9	<b>1</b>
adjust	12.2	<b>1</b>
adjust	10.8	<b>1</b>
adjust	9.9	<b>1</b>

## Director half : 24 spokes dims for 1 trap assembly

Epoxy marked in black

<b>Dims feet</b>	<b>Dims cm</b>	<b>Number</b>
	14.3	<b>1</b>
5 1/2	14	<b>15</b>
	13.2	<b>1</b>
	13	<b>2</b>
adjust	14	<b>1</b>
adjust	12.6	<b>1</b>
adjust	11.5	<b>1</b>
adjust	10.8	<b>1</b>
adjust	10.1	<b>1</b>

## Each element half : 24 spokes repartition

	Reflector (red)		Dipole (blue)		Director (black)	
<b>10M</b>	5 ½ qty 3	6 ¾	5 ½ qty 3	4	5 ½ qty 3	4
<b>12M</b>	5 ½ qty 3	4 ¾	5 ½ qty 3	4 ¼	5 ½ qty 3	4 ¼
<b>15M</b>	5 ½ qty 3	6 ¾	5 ½ qty 3	5	5 ½ qty 3	5
<b>17M</b>	5 ½ qty 5	6 ¼	5 ½ qty 5	4 ⅝	5 ½ qty 5	4 ⅝
<b>20M</b>	5 ½ qty 5	6 ¼	5 ½ qty 5	5 ½	5 ½ qty 6	